



2017/18 Catalogue

A close-up portrait of a man with a beard and mustache, wearing a dark grey knitted beanie and a dark jacket. He is looking directly at the camera with a serious expression. The background is dark and out of focus, with some light spots suggesting a snowy or misty environment. The Scruffs logo is visible on the side of the beanie and on the jacket's collar.

**MASTERS AT WORK.  
MASTERS OF WORKWEAR.**

# BUILT FOR COMFORT 2017/18 RANGE CATALOGUE

This catalogue is your quick reference guide to the current Scruffs product range.

Scruffs is the performance workwear brand that delivers outstanding comfort, durability and great design at an affordable price. With a high quality range of safety footwear, workwear and accessories it's the brand of choice for hard working professional tradespeople.



## YOU KNOW BEST

Outstanding performance relies on having the right kit for the job. Scruffs works closely with tradespeople all year round to create products that work the way you want them to.

This is a selection of the new products that we've developed with their help...

**New! Worker Fleece** - Now available in graphite - [see pg.68](#)

**New! Twister Boot** - Now available in both black and women's sizes - [see pg.16](#)

**New! Neck Warmer** - In a lightweight stretch fabric for extra comfort - [see pg.92](#)

Covering the main challenges that tradespeople face every day in the toughest working environments, Scruffs uses leading technologies including GORE-TEX®, 3M Thinsulate®, Cordura® and Vibram® to create the high quality performance products that you need to get the job done. From waterproofing to wear resistance Scruffs has got you covered.

## GET CLOSER TO SCRUFFS

If you want to get involved in conversations, get the latest news and enter competitions, you can follow Scruffs on Facebook, Twitter, Instagram and Snapchat. There's a wide variety of content that's designed to inform and entertain you.



## KEEP IT LOCAL

Visit your local Scruffs dealer to see the current Scruffs range. You'll find your nearest dealer using the 'Find a Stockist' search tool at [www.scruffs.com](http://www.scruffs.com)

## SCRUFFS. FOR THE MASTERS AT WORK. BY THE MASTERS OF WORKWEAR.

### OCCUPATIONS: FOOTWEAR & WORK TROUSERS GUIDE

Useful recommendations are provided in this guide for the type of industry that each item of footwear and trouser is suitable for. This information is for guidance purposes only; always ensure that footwear selections are suitable for the appropriate end use. Certain employers and sites will only allow specific types of footwear to be used. Their guidance and/or requirements must be followed.

### RECOMMENDATION CATEGORIES:

Light Industrial - Domestic trades, Light manufacturing, 'Indoor' industrial

Medium Industrial - Construction, 'Outdoor' industrial

Heavy Industrial - Heavy 'Indoor' and 'Outdoor' industrial

# SAFETY CODES

## Footwear Safety Codes Explained

- SB** Safety basic toe protection tested with 200J impact and 15kN Compression force
- HRO** Heat resistant outsole compound tested at 300°C
- P** Penetration resistant outsole tested at 1100N
- A** Electrical resistance between foot and ground of between 0.1 and 1000 Megaohms
- E** Energy absorption of the seat region tested at 20J
- WRU** Water resistant upper leather
- WR** Water resistant footwear
- SRA** Slip resistance testing on tiles with NaLS lubricant
- SRB** Slip resistance testing on steel with glycerol lubricant
- SRC** Both SRA and SRB have been achieved
- S1** Upper from material other than all rubber or polymeric with closed seat region + SB + A + E + FO
- S2** S1 + WRU
- S3** S2 + P + cleated outsoles



# WATER PROTECTION RATINGS

## Water Protection Levels Explained

### Water resistant

Fabric that's resistant to light moisture

### Showerproof

Fabric that's resistant to light rain

### Waterproof

Fabric with taped seams that's resistant to heavy rain

# CONTENTS

## Gore-Tex® Safety Boots & Trainers pg.6-11

- Grind, Grip, Graft.

## Safety Boots pg.12-25

- Victory, Switchback, Oxide, Twister, Assault, Cheviot, Sharpe, Twister Sport, Mistral, Soar, Gravity.

## Safety Trainers pg.26-27

- Trent, Halo 2.

## Shoe Care pg. -29

- Spare Shoe Laces, Comfort Insoles, Footwear Cleaner, Footwear Proofer.

## Work Trousers pg.32-41

- 3D Pro Trousers, 3D Trade Trousers, Worker Plus Trousers, Worker Trousers, Expert Floor Laying Trousers, Expedition Thermo Trousers, Trade Denim.

## Shorts pg.42-43

- Trade Shorts, Worker Lite Shorts, Cargo Shorts.

## Jackets pg.44-57

- Expedition Tech Jacket, Classic Thermo Parka, Expedition Double Zip Jacket, Pro Jacket, Expedition Thermo Hooded Jacket, Worker Jacket, Rainsuit.

## Gilets pg.58-59

- Expedition Thermo Gilet, Classic Gilet.

## Softshells pg.60-67

- Pro Softshell, Trade Tech Softshell, Expedition Thermo Softshell.

## Fleece & Hoodies pg.68-71

- Zip Thru Fleece, Worker Fleece, Active Hoodie, Worker Hoodie.

## Polo & T-Shirts pg.72-75

- Worker Polo, Pro Active Zip Polo, Active T-Shirt.

## Base Layers pg.76-77

- Active Roll Neck Base Layer, Base Layer Top, Base Layer Bottoms.

## Women's Workwear pg.80-87

- Women's Twister, Worker Plus Trousers, Women's Expedition Jacket, Women's Active Hoodie, Women's Long Sleeved T-Shirt, Women's Active T-Shirt, Women's Active Polo.

## Accessories pg.90-102

- Vintage Bobble Hat, Peaked Beanie, Vintage Beanie Hat, Knitted Beanie, Neck Warmer, Winter Accessories Pack, Knee Pads, Expert Knee Pads, Clip Belt, Trade Socks, Ultimate Thermal Socks, Pro Socks, Worker Socks, Full Finger Max Performance Gloves, Precision Max Performance, Fingerless Max Performance Gloves, Utility Gloves, Shock Impact Gloves, Hawk Safety Specs, Falcon Safety Specs, Eagle Safety Specs, Work Watch.

## Size Guide pg.103



# **BUILT FOR** **CONSTANT** **COMFORT**

## **COMPLETELY WATERPROOF**

**FOR DRY FEET THROUGH DOWNPOURS  
& SOAKED SITES**

Tested in ankle-deep water to stay dry for a minimum of 80 hours.

## **FULLY BREATHABLE**

**FOR COOL, DRY FEET THAT GRAFT  
- NO SWEAT!**

Engineered with GORE-TEX® to remove sweat quickly.

Scruffs safety footwear with GORE-TEX® works as hard as you do to deliver ultimate comfort, so that you stay focused on the job.





# GRIND GTX

Safety Rating: S3 SRA HRO  
Suitable for heavy industrial occupations



Toe	Midplate	Uppers	Sole	Water rating
Steel	Composite	Leather	EVA & rubber	Waterproof

- Engineered with GORE-TEX® technology
- Completely waterproof and fully breathable
- Keep hard working feet dry, cool and comfortable all day

Colour: Black  
Sizes: 7-12 (inc. 10.5)







S3 rated fully waterproof and breathable boot with GORE-TEX®, a steel toe and composite midplate. This boot has a durable, heat resistant outsole. GORE-TEX® gives you the ultimate in waterproof protection and the comfort of breathability.

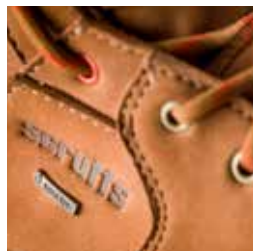




# GRIP GTX

Safety Rating: S3 SRA HRO

Suitable for heavy industrial occupations



Toe	Midplate	Uppers	Sole	Water rating
Steel	Composite	Leather	EVA & rubber	Waterproof

- Engineered with GORE-TEX® technology
- Completely waterproof and fully breathable
- Keep hard working feet dry, cool and comfortable all day

Colour: Black / tan

Sizes: 7-12 (inc. 10.5)

S3 rated fully waterproof and breathable boot with GORE-TEX®, a steel toe and composite midplate. This boot has a durable, heat resistant outsole. GORE-TEX® laminate gives you the ultimate in waterproof protection and the comfort of breathability.

# GRAFT GTX

Safety Rating: S3 SRA HRO

Suitable for heavy industrial occupations

S3 rated fully waterproof and breathable shoe with GORE-TEX®, a steel toe and composite midplate. This boot has a durable, heat resistant outsole. GORE-TEX® gives you the ultimate in waterproof protection and the comfort of breathability.





Toe	Midplate	Uppers	Sole	Water rating
Steel	Composite	Leather	EVA & rubber	Waterproof

- Engineered with GORE-TEX® technology
- Completely waterproof and fully breathable
- Keep hard working feet dry, cool and comfortable all day

Colour: Brown

Sizes: 7-12 (inc. 10.5)



## VICTORY

Safety Rating: S3 SRA HR0

Suitable for medium industrial occupations



Toe	Midplate	Uppers	Sole
Steel	Steel	Nubuck leather	EVA & rubber





# V FOR VICTORY. V FOR VIBRAM.

A comfortable, hard wearing boot with an S3 safety rating. The highly durable Vibram® outsole provides a lightweight, sure-footed feel. Foot protection is assured with a steel toe and midplate.



**Specification:**

- Highly durable Vibram® outsole
- Nubuck leather upper
- Steel toe and midplate

**Colour:** Black

**Sizes:** 7-12 (inc. 10.5)



# SWITCHBACK

Safety Rating: S3 SRA HRO  
Suitable for heavy industrial occupations



Toe	Midplate	Uppers	Sole	Water rating
Steel	Composite	Nubuck leather	EVA & rubber	Water resistant upper

- EVA midsole delivers all day underfoot comfort
- Durable moulded toe protector
- Comfort fit cushioned sports inner sole and soft nubuck leather uppers

Colour: Tan / black / brown  
Sizes: 7-12 (inc. 10.5)

The Switchback is Scruffs' best selling boot. It is S3 rated with a steel toe and composite midplate. It also features tough lace reinforcements, heat resistant sole and hard wearing nubuck leather uppers.



# OXIDE

**Safety Rating: S3 SRA HRO**

Suitable for heavy industrial occupations

A hard wearing safety boot with a water resistant upper. A soft cushioned sole unit and padded tongue & ankle collar combine to make it incredibly comfortable in all conditions.



Toe	Midplate	Uppers	Sole	Water rating
Steel	Composite	Nubuck leather & suede	EVA & rubber	Water resistant upper

- Anti-static S3 safety rating with water resistant upper
- Cushioned sole delivers a soft ride feel
- Padded tongue & collar for extra comfort

Colour: Tan

Sizes: 7-12 (inc. 10.5)



NEW COLOUR

## TWISTER

Safety Rating: SBP SRC HRO

Suitable for medium industrial occupations

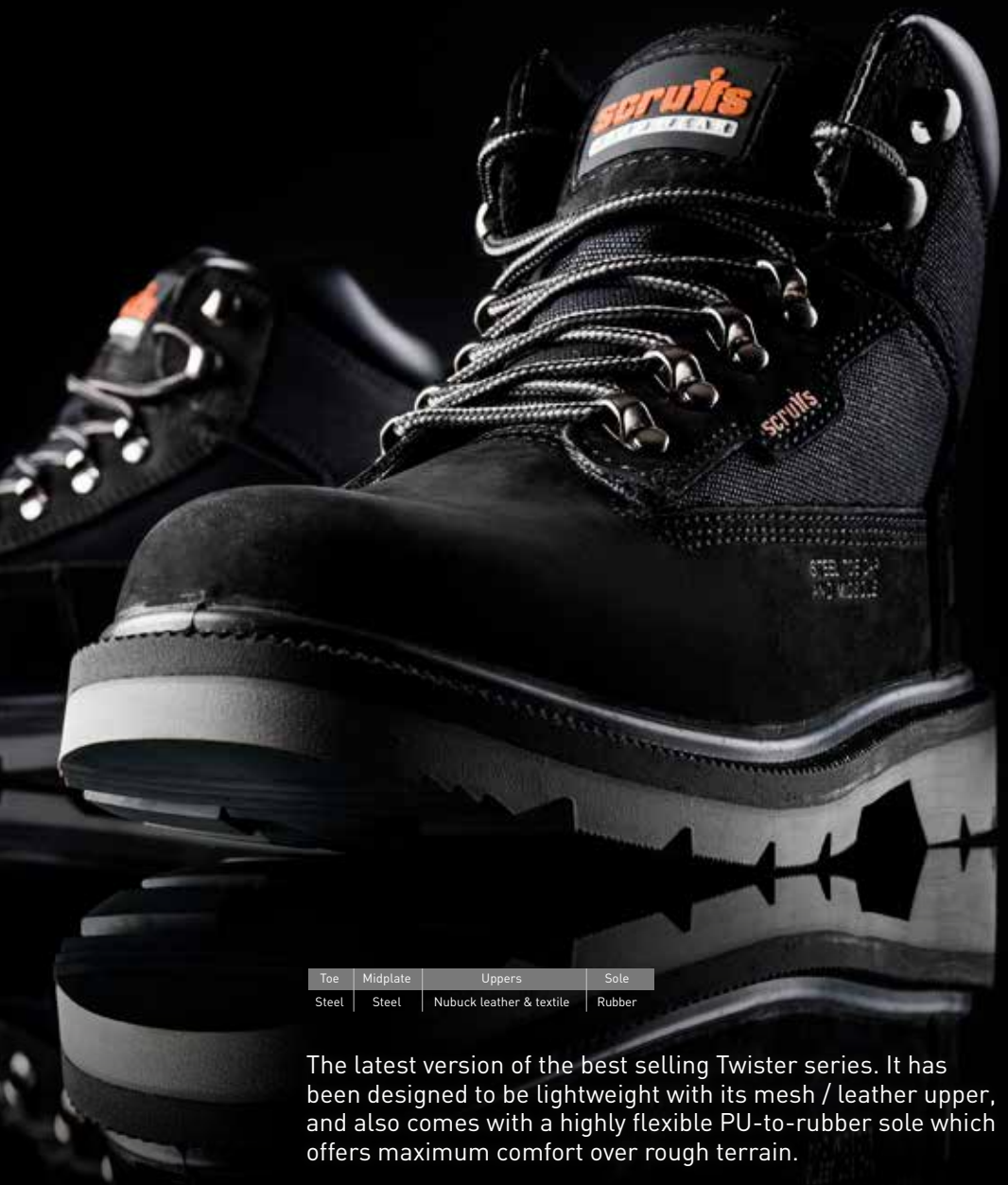


- Contrast colour panels provide a modern look
- Highly flexible, lightweight sole delivers maximum comfort & stability
- Supple leather with padded tongue & collar for extra comfort

Colour: Tan / black  
Sizes: 7-12 (inc. 10.5)

# BACK IN BLACK





Toe	Midplate	Uppers	Sole
Steel	Steel	Nubuck leather & textile	Rubber

The latest version of the best selling Twister series. It has been designed to be lightweight with its mesh / leather upper, and also comes with a highly flexible PU-to-rubber sole which offers maximum comfort over rough terrain.

# ASSAULT

Safety Rating: SBP SRC  
Suitable for medium industrial occupations



- Tough scuff resistant toe bumper
- Soft padded collar for all-day comfort
- Quick lacing reinforced lace eyelets

Colour: Black / brown  
Sizes: 7-12 (inc. 10.5)

Toe	Midplate	Uppers	Sole
Steel	Steel	Leather	EVA & rubber



# CHEVIOT

Safety Rating: S3 SRA HRO

Suitable for medium industrial occupations



Toe	Midplate	Uppers	Sole	Water rating
Steel	Composite	Nubuck leather	Rubber	Water resistant upper

- Anti-static S3 safety rating with water resistant upper
- Aluminium toe and composite midplate for lightness
- Deep tread anti-clog sole for great grip

Colour: Black

Sizes: 7-12 (inc. 10.5)

A hard wearing boot with an S3 safety rating. This boot has an aluminium toe and composite midplate for a truly lightweight feel. In addition, it has a heat resistant sole and nubuck upper.





A hard wearing safety boot with a nubuck leather water resistant upper. A Goodyear welted construction with a durable sole unit, padded tongue & ankle collar combine to make this boot incredibly comfortable.



# SHARPE

Safety Rating: S3 SRA HRO

Suitable for heavy industrial occupations



Toe	Midplate	Uppers	Sole	Water rating
Steel	Composite	Nubuck leather	EVA & rubber	Water resistant upper

- Hard wearing all-terrain design
- Tough Goodyear welted sole unit
- Padded tongue & collar for extra comfort

Colour: Tan

Sizes: 7-12 (inc. 10.5)

# TWISTER SPORT

Safety Rating: **SBP SRC HRO**

Suitable for light industrial occupations

Toe	Midplate	Uppers	Sole
Steel	Composite	Nubuck leather	Rubber

- Flexible sole for comfort working in tight spaces
- Quick-lace reinforced eyelets
- Supple leather with padded tongue & collar for extra comfort

Colour: Tan

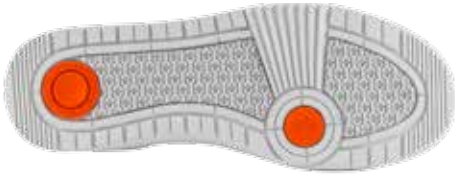
Sizes: 7-12 (inc. 10.5)

“Great looking, durable safety boot has a padded tongue and collar for extra comfort.”

# MISTRAL

Safety Rating: S1P SRC HR0

Suitable for light industrial occupations



Toe	Midplate	Uppers	Sole
Steel	Composite	Nubuck leather	Rubber



- High quality full grain nubuck leather
- Padded tongue & collar for extra comfort
- Tough yet lightweight sole construction

Colour: Navy

Sizes: 7-12 (inc. 10.5)

Mid-ankle safety boot with a full grain nubuck upper. Comes with a durable outsole, a padded collar for comfort, and a composite midplate to give a lighter weight feel whilst maximising underfoot protection.



# SOAR

Safety Rating: S1P SRA HR0  
Suitable for medium industrial occupations



A mid-ankle safety boot combining strength, durability and comfort to beat the rigours of trade use.

- Lightweight composite toe/midplate combination
- Ventilated suede/mesh upper
- Delivers strength, durability and comfort

Toe	Midplate	Uppers	Sole
Steel	Composite	Suede & mesh	EVA & rubber

Colour: Black  
Sizes: 7-12 (inc. 10.5)





# GRAVITY

Safety Rating: S1P SRC

Suitable for heavy industrial occupations



Toe	Midplate	Uppers	Sole	Water rating
Steel	Steel	Leather	Rubber	Water resistant upper

- Padded ankle support for extra stability
- Soft fleece lining for comfort and warmth
- Grip loops for easy 'on & off'

Colour: Black / tan

Sizes: 7-12 (inc. 10.5)

Hard wearing safety rigger boot with a fleece lining, padded ankle support and triple stitched seams, which combine to offer tradesmen pull-on protection for heavy construction work.



# TRENT

Safety Rating: S1P SRA HRO  
Suitable for medium industrial occupations



Toe	Midplate	Uppers	Sole
Composite	Composite	Suede & mesh	EVA & rubber

- Super lightweight composite toe & sole combination
- EVA footbed delivers all-day cushioned comfort
- Supple suede and ventilated mesh upper

Colour: Black  
Sizes: 7-12 (inc. 10.5)

Safety trainer with an EVA footbed, composite toe and midplate. This trainer gives maximum protection, combined with being extremely lightweight.

# HALO 2

Safety Rating: SBP SRA HR0

Suitable for light industrial occupations



This sports styled safety trainer features a steel toe and composite midplate. It also has a padded tongue and ankle collar for extra comfort.

Toe	Midplate	Uppers	Sole
Steel	Composite	Suede leather & textile	EVA & rubber

- Lightweight, flexible sole for comfort working in tight spaces
- Padded tongue & collar for extra comfort
- Low profile casual look

Colour: Navy

Sizes: 7-12 (inc. 10.5)



# PROTECT YOUR BOOTS



WITH OUR RANGE OF  
**ACCESSORIES**



## SPARE LACES

Hard Wearing Boot Lace

Made from 80% recycled PET, these hard wearing laces are designed to fit all Scruffs footwear.



## COMFORT INSOLES

Comfortable Replacement Insoles

These comfort insoles have a moisture wicking microfibre top sheet, open-cell shock absorbing memory foam and felt base for moisture management, durability and comfort.



## FOOTWEAR CLEANER

Inside-out Cleaning for all Footwear

Footwear cleaner plus boot and shoe scrub. Great at getting grime off all types of footwear. This deep cleaning formula improves the performance of waterproofing treatments. Recommended for GORE-TEX® and all breathable fabrics.



## FOOTWEAR PROOFER

Water Repellency for all Footwear

Footwear proofer plus boot and shoe guard. Spray-on application repels water & stains whilst maintaining breathability. Suitable for use on all types of materials including full grain leather, nubuck, suede and fabric footwear. Recommended for GORE-TEX® and all breathable fabrics.



# PRO KIT

Ultimate performance gear that's expertly engineered with the best technical materials to deliver unrivalled performance.

## The kit includes:

1. Pro Softshell
2. Active Pro Polo
3. 3D Pro Trousers
4. Grip GORE-TEX® Boots
5. Trade Socks
6. Clip Belt







# 3D PRO TROUSER

Ultra Durable Work Trousers with Cordura® Reinforcements  
Suitable for heavy industrial occupations

**CORDURA®**  
WORK

- Premium quality, highly durable fabric with zipped thigh vents for increased comfort
- 3D shaped curved leg design for all day comfort and ease of movement
- Ultra durable Cordura® reinforced knee pads and hem
- Holster pockets and multi function pockets with zip and Velcro® fastenings

Colour: Graphite

Sizes: 30-40" R / 32-38" XL


Material weight	Fit	Fly	Knee pad	Pockets
300gsm	3D shaped	Zip	Cordura®	Holster and multi function



Gel print to inner waistband for extra grip, and meshed zip vents to inner thigh for extra comfort and breathability in warmer weather.







Premium quality, highly durable work trouser with ergonomic fit for lasting comfort. Reinforced with Cordura® for outstanding durability.

# 3D TRADE TROUSER

Hard Wearing Work Trousers with Cordura® Fabric

Suitable for heavy industrial occupations

**CORDURA®**



- Heavy duty poly/cotton fabric
- Anti-abrasion Cordura® reinforced kneepad pockets and hem
- Triple stitched for ultimate durability
- 3D shaped fit for lasting comfort and ease of movement
- Large cargo and multi-function pockets with zip and Velcro® fastenings

Colour: Black

Sizes: 28-36" S / 28-40" R / 30-40" L / 32-38" XL

Colour: Graphite

Sizes: 28-36" S / 28-40" R / 38-40" L / 32-40 XL

Material weight	Fit	Fly	Knee pad pocket	Pockets
300gsm	3D shaped	Zip	Cordura®	Holster and multi function



Durable poly/cotton twill work trousers with polyester and Cordura® fabric reinforcements in key stress areas. 3D ergonomic fit and multiple secure pockets provide lasting comfort and performance throughout the working day.



# WORKER PLUS TROUSER

Work Trousers with Multi-function Pockets  
Suitable for medium industrial occupations

Material weight	Fit	Fly	Knee pad pockets	Pockets
250gsm	Regular	Zip	Polyester	Holster and multi function

- Tough, hard wearing poly/cotton fabric reinforced in key stress areas
- Multiple pockets including holster for versatility
- Regular fit for easy movement and lasting comfort

Colour: Black  
Sizes: 28-38" S / 28-38" R / 30-38" L

Colour: Navy  
Sizes: 28-38" R / 30-38" L



Lightweight yet durable work trousers with hard wearing knee pad pockets. They also include functional tuck away holster pockets.





# WORKER TROUSER

Work Trousers with Multi-function Pockets  
Suitable for medium industrial occupations



- Durable, lightweight polyester cotton mix fabric reinforced in key areas
- Versatile multi-function pockets for accessories
- Regular fit for easy movement

Colour: Black  
Sizes: 30-40" R / 30-40" L / 32-38" XL

Colour: Graphite  
Sizes: 30-40" R / 30-40" L

Colour: Navy  
Sizes: 30-40" R / 30-40" L / 32-38" XL

Material weight	Fit	Fly	Knee pad pockets	Pockets
245gsm	Regular	Zip	Poly/cotton	Multi function

Lightweight, durable work trousers made for lasting comfort and protection. They include knee pad pockets and a key loop and are reinforced in stress areas.





Designed specifically for floor layers these durable, ergonomically designed work trousers combine longer length Cordura® fabric knee pad inserts with an internal grip waistband and 4-way stretch panel.

# EXPERT FLOOR LAYING TROUSER

Ultra Durable Work Trousers with Cordura® Fabric  
Suitable for heavy industrial occupations

**CORDURA**  
FABRIC

- Hard wearing poly/cotton fabric, triple stitched in key stress areas
- 3D shaped fit for all day comfort and ease of movement
- Ultra durable Cordura® reinforced knee pads, knife pockets and hem
- Extra padding over knees to operate carpet kickers
- Adjustable knee backs for comfort when kneeling
- Bottom loading longer length knee pad inserts (for optional extra Expert Knee Pads)

Colour: Black

Sizes: 30-40" R / 30-38" L



To be used with Expert  
Knee Pads  
(See page 94)



Material weight	Fit	Fly	Knee pad pocket	Pockets
300gsm	3D shaped	Zip	Cordura®	Multi function



# EXPEDITION THERMO TROUSER

Heavy Duty Lined Trousers  
Suitable for medium industrial occupations

**CORDURA®**  
**3M Thinsulate**

Made from a durable PU coated fabric with sealed seams and 3M Thinsulate™ padding these work trousers are designed to keep you warm and comfortable when working in tough winter conditions.



Material weight	Fit	Insulation	Knee pad pocket	Waterproof rating
280gsm	Relaxed	3M Thinsulate™	Cordura®	Water resistant

- Hard wearing, PU coated fabric
- 3M Thinsulate™ lined for extra warmth in cold conditions
- Ultra durable Cordura® reinforced knee pad inserts
- Gaiters to hem with lace hook
- Secure, multi function pockets
- Flexible fit adjustable waist and hem
- Reinforced panelling to pockets and legs
- Zipped vents to thighs

Colour: Black  
Sizes: M 32" / L 34" / XL 36" / XXL 38"





# TRADE DENIM

## Heavy Duty Work Jeans

Suitable for medium industrial occupations

- Hard wearing poly/cotton mix denim for durability and comfort
- Versatile multi pockets and cargo pocket
- Bottom loading knee pad pockets

Colour: Blue

Sizes: 30-40" R

Great looking denim jeans with the core performance and durability features of Scruffs renowned work trousers built in.

Material weight	Fit	Knee pad	Pockets
310gsm	Regular	Denim	Cargo and multi function



# TRADE SHORTS

Work Shorts with Multiple Pockets  
Suitable for medium industrial occupations



- All of the working versatility of the 3D Trade Trousers in a pair of shorts
- Lighter weight summer fabric for comfort and coolness
- Multiple pockets including holster for versatility

Colour: Black /  
ink blue /  
slate grey  
Sizes: 28-40"

Material weight	Fit	Pockets
250gsm	Regular	Multi function

Durable and lightweight work shorts with tough reinforcements in stress areas. Easy to access cargo pocket, phone pocket and rule pocket, as well as tuck away holster pockets.



## WORKER LITE SHORTS

Work Shorts with Multiple Pockets

Suitable for light industrial occupations

- Lightweight poly/cotton summer fabric
- Stud fastening multi function pockets
- Branded key loop

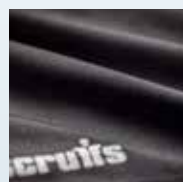
Colour: Black

Sizes: 30-40"



Material weight	Fit	Pockets
210gsm	Regular	Multi function

Lightweight and durable work shorts designed to keep you cool in the summer months. Reinforced in stress areas.



## CARGO SHORTS

Work Shorts with Multiple Pockets

Suitable for light industrial occupations



Material weight	Fit	Pockets
215gsm	Regular	Side and double cargo

- Soft comfortable cotton twill fabric with classic styling
- Double side cargo pockets
- Woven belt included

Colour: Charcoal / navy / khaki

Sizes: 30-38"

Hard wearing and comfortable cotton twill combat shorts with multiple cargo pockets and an adjustable belt.

# EXPEDITION TECH JACKET

Technical Work Jacket

3M Thinsulate

- Water resistant jacket with taped seams to protect against the elements
- Secure, easy access zipped pockets including a torch compartment
- 3M Thinsulate™ lining for all-day warmth in cold conditions

Colour: Black

Sizes: S-XXL



Material weight	Fit	Insulation	Fastening	Waterproof rating
250gsm	Regular	3M Thinsulate™	Zip thru fastening	Water resistant



This hard wearing jacket has taped seams and is water resistant to provide protection from the elements when working outdoors. It is packed full of technical features such as a 3M Thinsulate™ lining and torch pockets.





# CLASSIC THERMO PARKA

Heavy Duty Work Coat  
Suitable for heavy industrial occupations

**CORDURA®**

- Hard wearing waterproof fabric with hard wearing Cordura® elbow panels
- Fully padded bubble quilted lining for extra warmth
- High wind-cheat collar for extra protection
- Large internal & external secure zipped pockets
- Detachable hood with removable synthetic fur trim

Colours: Dark lead  
Sizes: S-XXL



Material weight	Fit	Insulation	Fastening	Waterproof rating
190gsm	Relaxed	3M Thinsulate™	Zip thru	Water resistant

This heavy duty work jacket benefits from a detachable hood with removable synthetic fur, a high collar for increased protection against the elements and multiple secure functional pockets.



# EXPEDITION DOUBLE ZIP JACKET

## Heavy Duty Work Jacket

- Heavy duty 100% nylon body fabric with sleeve & shoulder reinforcements
- Anti-storm & cold double zip fastening
- Internal bubble padding with microfleece lined hood for exceptional warmth
- Secure side entry pocket, sleeve zip pockets and internal pocket
- Blank left chest to apply a company logo

Colour: Black

Sizes: S-XXL



Material weight	Fit	Fastening	Waterproof rating
135gsm	Regular	Double zip fastening	Showerproof



Made from a hard wearing nylon fabric and with additional nylon reinforcements. Fully padded body and microfleece lining combine to make this an ideal heavy winter jacket.

# PRO JACKET

Waterproof Site Jacket

- Hard wearing waterproof fabric with reinforced Cordura® elbow panels
- Fully waterproof with taped seams, storm flaps and storm zips
- Insulated half fleece lining with concealed hood for extra warmth
- Large external front and side zip pockets for accessories

Colour: Black

Sizes: S-XXL



Material weight	Fit	Fastening	Waterproof rating
150gsm	Regular	Zip thru	Waterproof

Fully waterproof with taped seams, storm flaps and storm zips. An insulated half fleece lining and concealed hood provide extra warmth and protection from the elements.







# EXPEDITION THERMO HOODED JACKET

Classically Styled Work Jacket

3MThinsulate

- Lightweight but hard wearing  
100% nylon mini ripstop  
fabric
- Insulated 3M Thinsulate™  
lining within an outdoor style  
bubble design
- Breathable four-way stretch  
panels under each arm
- Elasticated cuffs and hem,  
secure zip pockets and  
reflective detailing

Colours: Graphite / blue  
Sizes: S-XXL

Outdoor performance  
inspired jacket which  
uses 3M Thinsulate™  
technology to provide  
a lightweight but  
incredibly warm winter  
jacket. Ideal for layering  
or for use as a top layer  
mid-season.



Material weight	Fit	Insulation	Fastening
58gsm	Slim	3M Thinsulate™	Zip thru



Hard wearing mini ripstop fabric increases the durability of this lightweight product, and breathable 4-way stretch panels to the underarm ensure lasting comfort throughout the day.





# WORKER KIT

Solid performance gear that delivers dependable comfort and protection with no-nonsense styling.

The kit includes:

1. Worker Jacket
2. Worker Polo
3. Worker Plus Trousers
4. Twister Boots
5. Beanie
6. Worker Socks







The Scruffs Worker Jacket has a lightweight mesh lining designed to reduce bulk and ensure optimum freedom of movement when working.



## WORKER JACKET

Lightweight Waterproof Jacket

- Tough, waterproof polyester ripstop fabric
- Fully taped seams
- Lightweight design to maximise freedom of movement
- Multiple secure zipped pockets for essentials tools and valuables

Colour: Graphite  
& orange

Sizes: S-XXXL



Material weight	Fit	Fastening	Waterproof rating
195gsm	Regular	Zip thru	Waterproof

A versatile all-weather jacket that keeps you dry as you work in comfort. Equipped with multi-function pockets to carry essential tools and gadgets.



# RAINSUIT

## Fully Waterproof Jacket & Over Trousers

- Side entry pockets
- Multiple drawcord adjusters and stud fasteners provide a watertight fit
- Two front pockets, tail hem, and elasticated cuffs & waist

Colours: Black / yellow

Sizes: L-XL



Material weight	Fit
230gsm	Relaxed

Fastening
Jacket: zip thru
Trousers: elasticated

Waterproof rating
Waterproof

Tough polyester fabric with taped seams for enhanced protection from the elements. The drawcord adjusters and stud fasteners combine to provide a watertight solution.





# EXPEDITION THERMO GILET

Insulating Bodywarmer

3M Thinsulate



This outdoor performance inspired gilet uses 3M Thinsulate™ technology, which provides a lightweight solution to keep your core warm. Hard wearing mini ripstop fabric gives this lightweight bodywarmer enhanced durability.

Material weight	Fit	Insulation	Fastening
58gsm	Slim	3M Thinsulate™	Zip thru

- 3M Thinsulate technology delivers lightweight core warmth
- Hard wearing mini ripstop fabric
- Secure side and chest pockets for valuables

Colours: Black / blue

Sizes: S-XXL



## CLASSIC GILET

Padded Bodywarmer



Material weight	Fit	Fastening
260gsm	Slim	Zip thru

- Durable PU coated fabric, fully padded for extra warmth
- Multiple zipped pockets for safe storage, including an inside chest pocket
- Detachable hood and fur trim

Colour: Navy  
Sizes: S-XXL

This bodywarmer is made from durable PU coated fabric and is fully padded to keep you warm. It features zipped pockets for safe storage and a detachable hood.



# EXPEDITION THERMO SOFTSHELL

Body-mapped Softshell Jacket

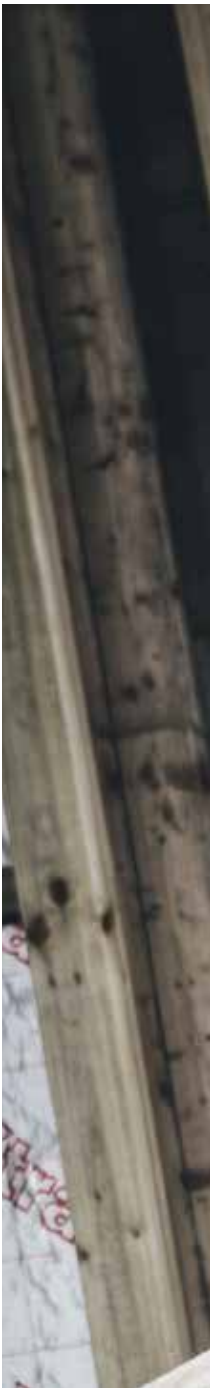
## 3MThinsulate

- Hard wearing nylon ripstop front and back panels
- Padded 3M Thinsulate™ for core warmth
- Softshell sleeves provide ease of movement
- Breathable underarm panels help to regulate body temperature
- Dipped hem provides extra coverage when leaning forwards
- Multiple side entry and chest pockets for secure storage



Colour: Graphite  
Sizes: S-XXL

Material weight	Fit	Insulation	Fastening
395gsm	Regular	3M Thinsulate™	Zip thru







The Scruffs Expedition Thermo Softshell uses a body-mapped design to balance insulation and freedom of movement where you need it most.

The Pro Softshell is a technical workwear jacket with contrast knit fabric and zip pockets throughout.



## PRO SOFTSHELL

### Water Resistant Work Jacket

- Technical, water resistant bonded fleece softshell fabric
- Multiple secure pockets with branded pull tabs to store accessories
- Soft fleece inner lining with reflective detailing

Colour: Black / charcoal

Sizes: S-XXL



Material weight	Fit
395gsm	Regular
Fastening	Waterproof rating
Zip thru	Water resistant



Technical work jacket with water resistant fabric and soft fleece inner lining. Features multiple secure pockets to store accessories and also includes reflective detailing.



# TRADE KIT

Hard wearing gear that delivers comfort while ensuring a professional look.

## The kit includes:

1. Trade Tech Jacket
2. 3D Trade Trousers (Graphite)
3. Clip Belt
4. Trade Socks
5. Switchback Boots (Tan)









Built tough with reinforced shoulders and abrasion resistant panels, a dipped back hem, zipped pockets for secure storage and ergonomic fit sleeves for ease of movement.

# TRADE TECH SOFTSHELL

## Lightweight Work Jacket

- Reinforced shoulders and abrasion resistant panels
- Dipped back hem for better coverage
- Zipped pockets for secure storage
- Ergonomic fit sleeves for ease of movement

Colour: Graphite & black

Sizes: S-XXL

Material weight	Fit	Fastening
395gsm	Regular	Zip thru







# ZIP THRU FLEECE

Jumper with Concealed Hood



Material weight	Fit	Fastening
320gsm	Relaxed	Zip thru

- Thick, hard wearing cotton rich material with a brushed back inner
- Concealed, double lined hood with a drawcord in the collar
- Ribbed waist and cuffs deliver a secure, comfortable fit

Colours: Navy / charcoal

Sizes: S-XXL

Made from a thick, hard wearing polyester / cotton material. Contains a concealed, double lined hood with drawcords in the collar. It also includes a ribbed waist and cuffs.



# WORKER FLEECE

Water Resistant Microfleece



Material weight	Fit	Fastening	Water rating
320gsm	Regular	Zip thru	Water resistant

- Lightweight, insulated, and quick drying after showers
- Zipped chest & side pockets, plus adjustable hem and elasticated cuffs
- Double stitched in key stress points for added strength

Colour: Black / graphite

Sizes: S-XXXL



Water resistant, quick drying fabric makes this the ideal top to see you through the changing seasons. Wear as a top layer in mid season, or as a second layer in cold weather to insulate body temperature. Elasticated cuffs and an adjustable hem help to keep cold air out.

# ACTIVE HOODIE

Insulating Midlayer

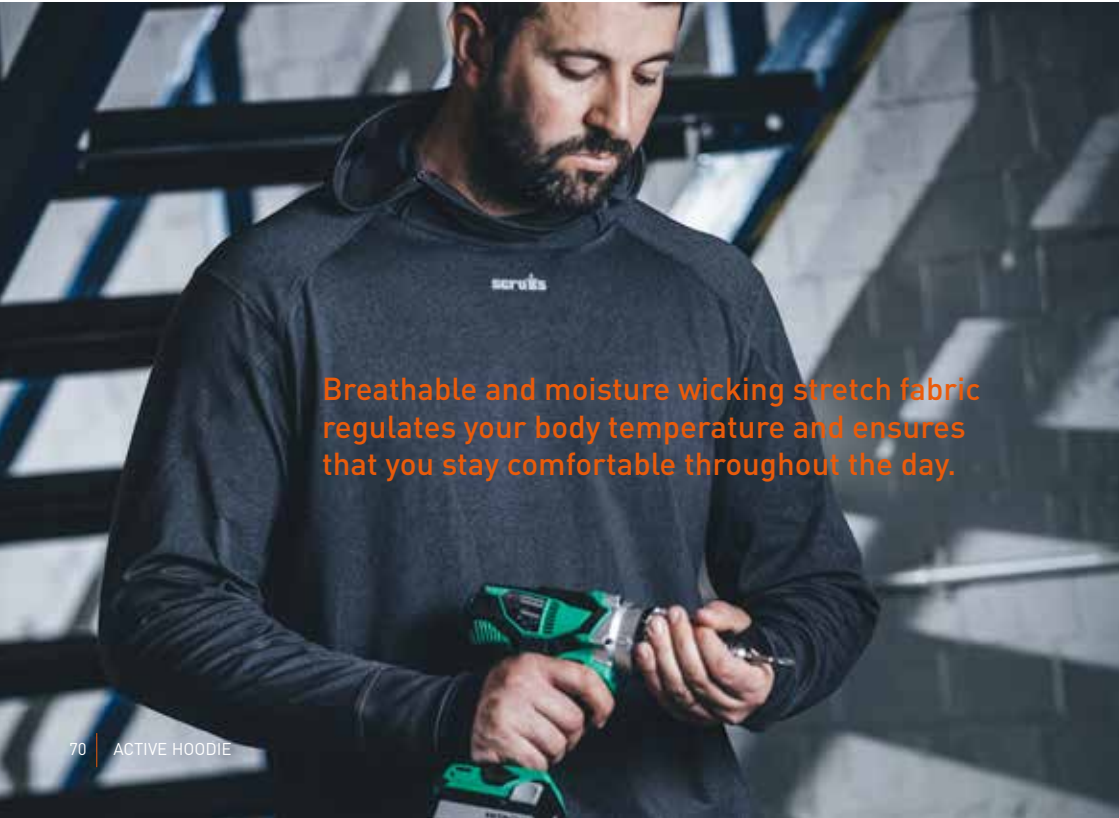
- Soft stretch polyester/elastane mix for ultimate active comfort
- Secure zip pockets with high neck hood for warmth
- Ribbed hem and cuffs plus ribbed panels to the sides for ease of movement

Colour: Charcoal marl  
Sizes: S-XXL

Material weight	Fit
180gsm	Slim



Elasticated cuffs with thumb grips hold the sleeves in place, whilst a ribbed hem helps to keep out cold air. Secure YKK zipped pockets provide storage for your accessories.



Breathable and moisture wicking stretch fabric regulates your body temperature and ensures that you stay comfortable throughout the day.

# WORKER HOODIE

## Hooded Pullover

- Cotton rich fabric with a brushed back for comfort and warmth
- High neck 'wind cheat' collar
- Secure zipped pockets for valuables

Colour: Grey

Sizes: S-XXL

Material weight	Fit	Pocket
320gsm	Relaxed	Secure zip



A robust cotton rich brushed back fabric keeps you warm and comfortable when working.



# WORKER POLO

## Hard Wearing Polo Shirt

- Durable, soft and comfortable 100% knitted cotton (Grey marl: 15% polyester )
- Button fastening right-hand chest pocket
- Blank left chest, ideal for company profiling

Colour: Blue / white / graphite  
green / grey marl / black

Sizes: S-XXL

Material weight	Fit	Fastening
220gsm	Regular	Button



Durable and comfortable cotton polo shirt with chest pocket. Available in a wide range of colours. Blank left chest, ideal for company logo.





# PRO ACTIVE ZIP POLO

Lightweight Wicking Polo Shirt

- Lightweight polyester fabric that manages moisture to deliver all day freshness
- Zipped security pocket
- Blank left chest for company profiling

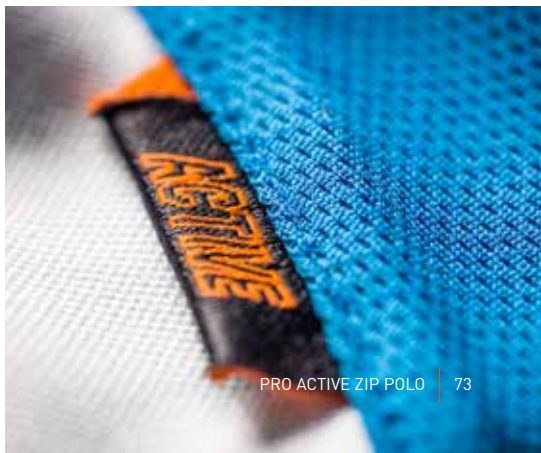
Colour: White / green / navy

Sizes: S-XXL

Material weight	Fit	Fastening
180gsm	Regular	Button



Using a moisture management system this lightweight polo will keep you feeling fresh and comfortable all day long.



## ACTIVE POLY T-SHIRT

CE Rated with 40+ SPF Protection



- Lightweight stretch fabric that wicks away moisture quickly
- 40+ UV protection

Material weight	Fit	UV protection
180gsm	Regular	40+

Colour: Grey

Sizes: S-XXL

Sports inspired design with the added benefit of 40+ UV protection make this t-shirt ideal for working outside during the summer months. Lightweight and moisture wicking to keep you comfortable throughout the day. Certified to EN 13758-1: 2001+A1:2006.





# ACTIVE ROLL NECK BASE LAYER

Cotton Rich Base Layer

Material weight	Fit
220gsm	Slim

- Lightweight, 4-way stretch fabric for optimum fit
- Cotton content moisture wicking design maintains body temperature
- Roll neck design for extra warmth

Colour: Grey marl

Sizes: S-XXL



Lightweight and moisture wicking base layer top made from high-stretch material with a cotton content for optimum fit and comfort. Flat lock seams to the arms reduce abrasion, and a roll neck design increases warmth, making this top ideal for layering during cold winter months.





# BASE LAYER TOP

## Active Range Thermal Top

Material weight	Fit
230gsm	Slim

- Lightweight, 4-way stretch fabric for optimum fit
- Cotton content moisture wicking design maintains body temperature
- Skin tight fit for comfort when layering

Colour: Black

Sizes: M-XXL



# BASE LAYER BOTTOMS

## Active Range Thermal Bottoms

Material weight	Fit
230gsm	Slim

- Lightweight 4-way stretch fabric for optimum fit
- Cotton content moisture wicking design maintains body temperature
- Skin tight fit for comfort when layering

Colour: Black

Sizes: M-XXL



Moisture wicking technology conserves energy to maintain body temperature.

# WOMEN'S KIT

Striking technical gear that delivers performance and protection with a women's 'comfort fit' at its core.

The kit includes:

1. Women's Expedition Jacket
2. Women's Active Hoodie
3. Women's Active T-Shirt
4. Women's Worker Plus Trouser
5. Women's Twister Boot
6. Knee Pads
7. Clip Belt





# WOMEN'S TWISTER

Safety Rating: SBP SRC HRO

Suitable for medium industrial occupations

The best selling, all time favourite Scruffs boot now comes in smaller sizes. It has been designed to be lightweight with its mesh / leather upper, and also comes with a highly flexible PU-to-rubber sole which offers maximum comfort over rough terrain.







Toe	Midsole	Uppers	Sole
Steel	Steel	Nubuck leather & textile	Rubber

- Contrast colour panels provide a modern look
- Highly flexible, lightweight sole delivers maximum comfort & stability
- Supple leather with padded tongue & collar for extra comfort

Colour: Tan

Sizes: 3-6.5 (7-12 also available)

# WOMEN'S WORKER PLUS

Hard Wearing Work Trousers  
Suitable for medium industrial occupations

Specially designed women's fit with all the features and function of the best-selling men's Worker Plus Trouser.

- Womens fit for comfort and appearance
- Multiple pockets including holster for versatility
- Knee pad pockets for protective knee pads (optional)

Colour: Black  
Sizes: 8-16R



Hard wearing polyester cotton blend twill fabric with rugged contrast knee pad inserts, triple stitching to reinforce stress seams, a comfort gusset and YKK zips. They include multiple pockets and reinforced hems.

Material weight	Fit	Fly	Knee pad pockets	Pockets
245gsm	Women's relaxed	Zip	Polyester EVA & rubber	Holster and multi function



# WOMEN'S EXPEDITION JACKET

Insulated Work Jacket

3M Thinsulate

- Hard wearing insulated jacket for all day warmth
- Wraparound hood with removable synthetic fur trim
- Stretch panels for ease of movement

Colour: Graphite

Sizes: 8-16

The tough nylon ripstop fabric is hard wearing to deliver lasting protection. A warm, 3M Thinsulate™ lining ensures all-day warmth.



Material weight	Fit	Insulation	Fastening	Waterproof rating
220gsm	Women's slim	3M Thinsulate™	Double zip	Water resistant



# WOMEN'S ACTIVE HOODIE

## Lightweight Hoodie

- Sports inspired women's fit for active comfort
- Raglan sleeves for easy movement
- Stretch fabric for flexible fit and comfort when reaching

Colour: Graphite

Sizes: 8-16

Material weight	Fit	Fastening
220gsm	Women's slim	Over head with 3/4 zip



The slim fit Scruffs Women's Active Hoodie is ideal for layering in cool conditions. The lightweight stretch fabric is breathable and moisture wicking to ensure maximum comfort, whilst raglan sleeves provide ease of movement. Thumb grips to the cuffs hold the sleeves in place, whilst an adjustable hood allows you to create your optimum fit.





# WOMEN'S LONG SLEEVED T-SHIRT

## Soft Feel Work Jersey

- Sports inspired women's fit for active comfort
- Luxurious soft feel cotton viscose mix
- Longer length body for extra comfort

Colour: Graphite

Sizes: 10-16

Material weight	Fit
220gsm	Women's slim



This long sleeve t-shirt is made from a cotton viscose blend fabric to provide a soft feel. It has a longer length body for extra comfort when working and has a blank left chest for corporate logo profiling.



# WOMEN'S ACTIVE POLO

Lightweight Wicking Polo Shirt



Material weight	Fit	Fastening
220gsm	Women's regular	Button

- Sports inspired women's fit for active comfort
- Lightweight hard wearing polyester construction
- Moisture wicking polyester for all day freshness

Colour: Black  
Sizes: 10-16

This lightweight and breathable polo helps to regulate body temperature while you work. The moisture wicking finish helps to wick sweat away from the body, keeping you cool and dry. It has a specially designed women's fit and features a button placket, ribbed collar and ribbed cuffs.



# WOMEN'S ACTIVE T-SHIRT

Moisture Wicking T-Shirt



Material weight	Fit
180gsm	Women's slim

- Sports inspired women's fit for active comfort
- Moisture wicking polyester for all day freshness
- Stretch fabric for flexible fit and comfort when reaching

Colour: Plum

Sizes: 8-16

The Scruffs Women's Active T-Shirt has a contemporary sportswear-inspired design that's ideal for ensuring long-lasting comfort throughout the working day.



# ACTIVE KIT

Technical performance gear that's engineered to deliver durability and freedom of movement with great looks.

## The kit includes:

1. Expedition Thermo Softshell
2. Active Hoodie
3. 3D Trade Trousers
4. Grip GORE-TEX® Boots
5. Knee Pads
6. Clip Belt
7. Vintage Beanie Hat







# VINTAGE BOBBLE HAT

Thinsulate™ Lined Winter Hat

3M Thinsulate

- Warm and quick drying
- Soft microfleece and padded 3M Thinsulate™ lining for maximum warmth

Colour: Navy / red & black

Sizes: One size



Protect your head from the cold in this Scruffs winter hat. Lined with soft microfleece and padded with 3M Thinsulate™ for maximum warmth.

# PEAKED BEANIE

Warm Insulated Beanie

- Stylish peak with turn-up hem
- Knitted ear flaps for all day warmth
- Elasticated fit for extra comfort

Colour: Black / graphite

Size: One size



Knitted peak cap with turn up hem and ear flaps. Soft sherpa lining for increased warmth and comfort.

# VINTAGE BEANIE HAT

Warm 3M Thinsulate™ Insulated Beanie

**3M Thinsulate**



- Quick drying acrylic knit
- Dual density construction, insulated with 3M Thinsulate™ lining
- Elasticated fit for extra comfort

Colour: Orange & black / graphite

Size: One size

Padded with 3M Thinsulate™ and lined with soft microfleece for increased comfort and warmth.

# KNITTED THINSULATE™ BEANIE

Knitted Beanie with Thinsulate™ Lining

**3M Thinsulate**

- Quick drying acrylic knit
- Dual density construction, insulated with 3M Thinsulate™ lining
- Elasticated fit for extra comfort

Colour: Black

Size: One size



Dual density knitted beanie hat with 3M Thinsulate™ lining for maximum protection in cold weather.



NEW

## NECK WARMER

Fleece Neck Warmer

- Warm and lightweight
- 100% polyester

Colour: Black

Size: One size



The ideal accessory to keep you warm when working in cooler outdoor conditions. Lightweight stretch material provides full shift comfort and protection from the cold.





## WINTER FLEECE ACCESSORIES BOX

Pack includes Gloves, Scarf & Beanie

- Scruffs winter accessories box set
- Warm and lightweight

Colour: Black

Size: One size

Contains polar fleece hat, scarf and gloves with orange Scruffs embroidery. All products are super warm and lightweight with a soft feel and easy care properties.



# KNEE PADS

## CE Rated Knee Pads

- Certification EN14404: 2004+A1:2010 Type 2
- Penetration resistance level 0
- Lightweight and hard wearing
- All day comfort and Protection for knees

Colour: Grey

Size: One size



Lightweight and hard wearing EVA foam knee pads designed to fit Scruffs trousers.

# EXPERT KNEE PADS

## Designed to Fit Expert Floor Laying Trousers CE Rated Knee Pads

- Certification EN14404: 2004+A1:2010 Type 2
- Penetration resistance level 0
- Lightweight and hard wearing
- Specially extended to fit Scruffs Expert Floor Layer Trousers
- All day comfort and protection for knees

Colour: Grey

Size: One size



## CLIP BELT

Polycotton Belt

- Stylish weave
- Metal clip fastening

Colour: Black

Size: One size



Tough reinforced adjustable webbing belt. Metal buckle with embossed Scruffs logo.

Lightweight and hard wearing longer length knee pads designed to fit the Scruffs 3D Expert Floor Layer Trouser, providing increased protection when working on the knees.



## TRADE SOCKS (3PK)

Triple Pack of Reinforced Work Socks

- Reinforced for increased durability
- Arch support for hard working feet

Colour: Black & grey

Sizes: 7-9.5 / 10-13



## ULTIMATE THERMAL SOCKS

1 Pair of Extra Thick Socks

- Extra thick heavy bulk fabric
- Extra long terry cushioning
- Tog rating 2.3

Colour: Black

Sizes: 6-11



Reinforced with extra durable yarn in the heel and toe, these specially designed work socks offer market leading abrasion resistance for long lasting durability. The combination of extra dense foot cushioning and an extended toe panel make these socks ideal for wearing with steel toe cap boots.

## PRO SOCKS

Tough Reinforced Work Sock

- Extra thick durable socks
- Abrasion resistant for durability
- Dense foot cushioning and extended toe panel

Colour: Black

Sizes: 7-9.5 / 10-13





## WORKER SOCKS (3PK)

Triple Pack of Reinforced Work Socks

- Internal cushioned lining for warmth and comfort
- Reinforced heel and toe ensure maximum durability

Colour: Black

Sizes: 7-9.5 / 10-13



Scruffs new and improved Worker socks have an internal cushioned lining for warmth and comfort. Reinforced heel and toe ensure maximum durability, making them ideal for the hard working tradespeople.



# MAX PERFORMANCE WORK GLOVES



## FULL FINGERED

CE Rated Safety Gloves

- Adjustable PU/Velcro® wrist fastening
- Double stitched palm with fingertip reinforcement
- Knuckle protection with pre-curved fingers

Colour: Black

Size: One size

EN388 Certification Resistance:

Abrasion	Blade cut	Tear	Puncture
3	2	3	2



## PRECISION

CE Rated Safety Gloves

- Two exposed fingers and thumb for precision control
- Adjustable PU/Velcro® wrist fastening
- Double stitched palm with fingertip reinforcement
- Knuckle protection with pre-curved fingers

Colour: Black

Size: One size

EN388 Certification Resistance:

Abrasion	Blade cut	Tear	Puncture
4	2	4	1



## FINGERLESS

CE Rated Safety Gloves

- Exposed fingertips and thumb for precision control
- Adjustable PU/Velcro® wrist fastening
- Double stitched palm with fingertip reinforcement
- Knuckle protection with pre-curved fingers

Colour: Black

Size: One size

EN388 Certification Resistance:

Abrasion	Blade cut	Tear	Puncture
4	2	4	1



## UTILITY GLOVES

CE Rated Safety Gloves

- Comfort feel with ribbed cuff
- Latex/acrylic palm for added grip and protection

Colour: Black

Size: One size



EN388 Certification Resistance:

Abrasion	Blade cut	Tear	Puncture
1	1	3	2

## SHOCK IMPACT GLOVES

CE Rated Safety Gloves

- Adjustable PU/velcro® wrist fastening
- Designed to absorb shock and vibration when using power tools
- Gel padded palms keep hands steady to maintain grip

Colour: Black

Sizes: L / XL



EN388 Certification Resistance:

Abrasion	Blade cut	Tear	Puncture
2	4	2	1

# SAFETY GLASSES



## HAWK SAFETY SPECS

CE Rated to EN166

- Comfortable protective glasses
- UV protection with anti-fog technology
- Polycarbonate smoke lenses

Colour: Gun metal with smoke lenses



Frame material	Lenses
Nylon	Polycarbonate



## FALCON SAFETY SPECS

CE Rated to EN166

- Comfortable protective glasses
- UV protection with anti-fog technology
- Wraparound polycarbonate clear lenses

Colour: Orange / black

Frame material	Lenses
Nylon	Polycarbonate



Lightweight nylon framed safety glasses with UV protection and anti-fog technology.

## EAGLE SAFETY SPECS

CE Rated to EN166

- Comfortable protective glasses
- UV protection with anti-fog technology
- Polycarbonate smoke lenses

Colour: Black with smoke lens /  
orange with mirror lens

Frame material	Lenses
Nylon	Polycarbonate



# ACTIVITY TRACKER WATCH

Tough Work Watch

- Step counter
- Stop watch
- Alarm
- Light
- Water resistant



Tough, durable and water resistant. Features a step counter, alarm, light and stopwatch.



# SIZE GUIDE

## SCRUFFS FOOTWEAR SIZE GUIDE

### FIT TIPS

Not all brands of footwear fit the same. The standard size guide below is a good indicator of what size you should wear, but there may be slight variations in sizing between different brands. Most foot problems can be prevented by wearing properly fitting footwear. Don't assume that your footwear size remains the same. The shape of your feet changes as you get older. Have both feet measured regularly as most people have one foot larger than the other. Fit to the largest foot.

Always try footwear with your regular work socks. Make sure that they are laced properly. The ends of your toes should not touch the front part of the footwear. To double check the fit, untie the laces and slide your forefinger down the back of the footwear behind the heel. The ends of your toes should hit the front toe part of the footwear.

FOOTWEAR												
UK	4	5	6	6.5	7	8	9	10	10.5	11	12	
US	5	6	7	7.5	8	9	10	11	11.5	12	13	
EURO	37	38	39	40	41	42	43	44	45	46	47	

## SCRUFFS CLOTHING SIZE GUIDE

### MEASUREMENT TIPS

The fit of workwear depends on the cut, fabric and styling of the garment. If you're not sure, follow our top tips on how to measure yourself. Then refer back to the detailed workwear size guide shown below so you know which size you should buy.

### CHEST (A)

Measure around the fullest part of the chest. Place the measuring tape high up under your arms and make sure it's at the same height at the back across your shoulder blades.

### WAIST (B)

Measure around your natural waist line, on top of any underwear that you normally wear.

### INSIDE LEG (C)

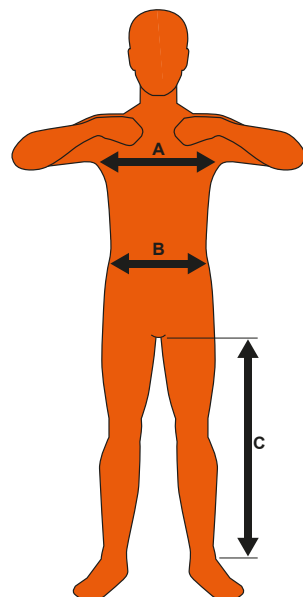
Measure from the top of the inside leg at the crotch to the hem.

MEN'S TROUSERS								
Waist Size		XS	S	M	L	XL	XXL	XXXL
Waist Inches		28	30	32	34	36	38	40
Waist CM		72	76	82	88	92	96	100
EURO D, NL, BE		42	44	46	50	52	54	56
EURO FR, ES, PT		36	38	40	44	46	48	50
		Extra Short	Short	Regular	Long	Extra Long		
Leg Inches		28	30	32	34	36		
Leg CM		71	79	81	86	91		

MEN'S TOPS/JACKETS						
Chest Size		S	M	L	XL	XXL
Chest Inches		38/40	42/44	44/46	46/48	48/50
Chest CM		96/102	107/112	112/117	117/123	123/127
EURO		48/50	54/56	56/58	58/62	62/64

WOMEN'S TROUSERS						
Waist UK		8	10	12	14	16
Waist Inches		26	28	30	32	34
Waist CM		68	72	76	80	88
Euro		36	38	40	42	44
			Short	Regular	Long	Extra Long
Leg Inches			30	32	34	36
Leg CM			79	81	86	91

WOMEN'S TOPS/JACKETS						
Chest UK		8	10	12	14	16
Chest Inches		30	34	36	38	40
Chest CM		84	88	92	96	100
Chest EURO D, BE, NL, NO, SV, DK		34	38	40	42	44
Chest EURO FR, ES, PT		36	40	42	44	46
Chest IT		40	42	44	46	46





# WWW.SCRUFFS.COM

**AUTHORISED DEALER**



Scruffs® - designed and distributed by Birchwood Price Tools. Birchwood Price Tools is a trading name of the BSS Group Limited, NG16 2AR  
GORE-TEX®, GORE® and designs are trade marks of W. L. Gore & Associates

DISCLAIMER: All prices stated as dealers prices ex. VAT but are subject to VAT at a rate of 20%. The Company's standard terms & conditions apply and are available upon request. All product descriptions are correct at the time of printing. Images are for guidance only and do not necessarily represent the goods on offer. The company reserves the right to modify products and withdraw promotions without prior notice. All promotional and value added FOC items are subject to stock availability, and may differ occasionally from those advertised. The Company endeavors to ensure that the information in this document is correct, but does not accept any liability for any error or omission herein. All rights are reserved. No part of this publication may be reproduced or transmitted in any form without written permission of the copyright holder.